



# THE VALUE OF PRE-LOSS PLANNING



# Why Plan???



# *Value of pre-planning*

---

- **Minimize business and life interruption**

Allows your teams to focus on their jobs and shortens potential displacement/relocation

- **Limit claim severity**

Quickly deploying certified professionals after a loss to initiate the recovery process reduces the size and cost of the claim

- **Mitigate potential risk**

Mishandling a claim in the early going can lead to a myriad of future risk associated issues

# Pre-loss Planning

---

- Identify internal team members and the roles each will perform in the event of a disaster
- Identify gaps and where you will need to enlist the services of external team members
- Bring both internal and external teams together BEFORE a disaster to review roles and responsibilities
- Clearly define communication protocols and establish service expectations with your external team members

# *Vetting external team members*

---

- Hold proper certifications and accreditations
- Maintain adequate and appropriate insurance coverage for the services they provide
- Bonding capabilities
- GSA schedule
- Employee screening and background check process
- Expertise and experience in your specific segment
- Resources, equipment, manpower (local/regional/national)

# *External team services*

---

- Pre-loss Planning
- Pre-approved Pricing
- Carrier Vendor Panel
- Dedicated Account Manager(s)
- Priority Response To Your Loss
- 24/7/365 Emergency Response Network
- Advanced Equipment & Resource Staging

# *External team services*

---

- Water Extraction & Moisture Control
- Fire & Smoke Restoration
- Odor Control
- Mold/Microbial Remediation
- Trauma Clean Up
- Documents, Books, Vital Records Recovery
- Machinery & Electronics Restoration
- Reconstruction

# *External team services*

---

- Generators
- Engineering – structural and environmental
- Potable water
- Security services
- Debris removal
- Sanitary services
- Essential trades – electric, plumbing, roofing, etc...
- Flood prevention – sandbagging, Tiger damming...
- Post strike assessment capabilities

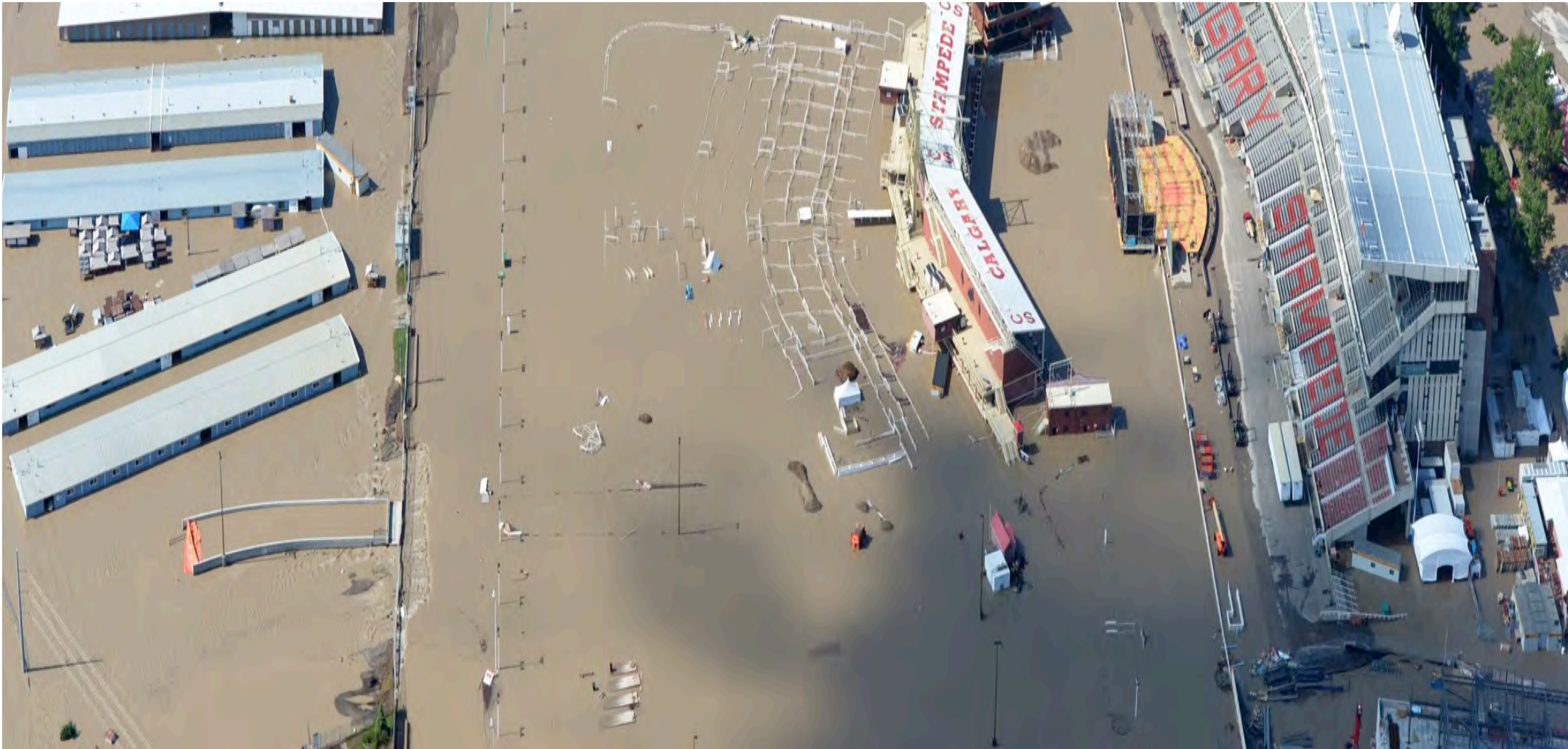


# *What to plan for?*





# What to plan for?



# *What to plan for?*

---





# Why Plan???





[jim.Boccher@smdsi.com](mailto:jim.Boccher@smdsi.com)

901-355-2618