



## Living with Extreme Weather Workshop: Summary and Path Forward

Alicia J. Kniedler  
University of Oklahoma

National Tornado Summit  
Cox Convention Center, Oklahoma City, OK  
March 1-2, 2016



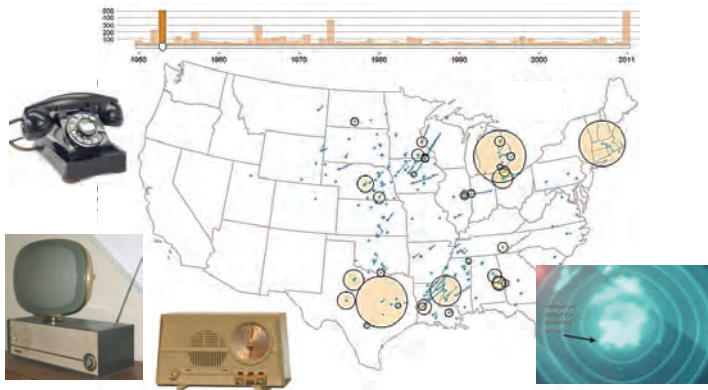
## Co-Authors and Funding



- **Lans P. Rothfus**: NOAA/National Severe Storms Laboratory
- **Kelvin K. Droegemeier**: University of Oklahoma
- **Alicia J. Kniedler**: University of Oklahoma
- **John Ferree**: National Weather Service (NWS)
- **Jen Henderson**: Virginia Polytechnic Institute and State University
- **Kodi L. Nemunaitis-Monroe**: University of Oklahoma Cooperative Institute for Mesoscale Meteorological Studies (CIMMS)/NSSL
- **Danielle Nagele**: NOAA Office of Program Planning and Integration
- **Kimberly Klockow**: NOAA/OAR Office of Weather and Air Quality

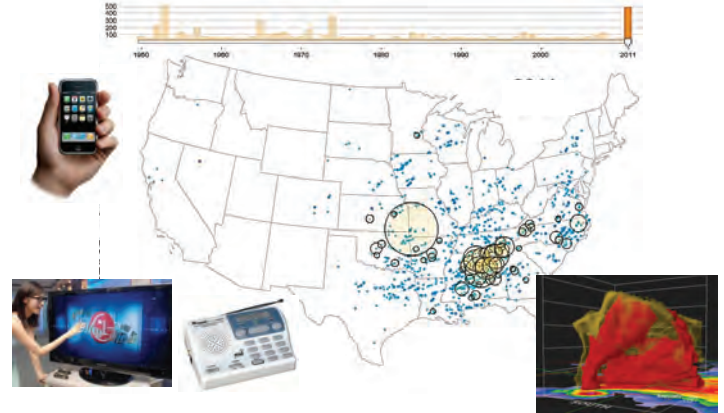
Funding provided by NOAA under grant NA11OAR4320072 to the University of Oklahoma, and by the Office of the Vice President for Research at the University of Oklahoma.

### The Challenge of Preventing Tornado-Related Deaths and Injuries: **The Year is 1953 (519 Deaths)**



3

### The Challenge of Preventing Tornado-Related Deaths and Injuries: **The Year is 2011 (550 Deaths)**



4



## A National Imperative



- Making progress toward the bold goal of dramatically and consistently **decreasing mortality from extreme weather** requires -- in addition to advances in physical science, engineering and technology -- solutions to deep, fundamental questions that engage multiple disciplines, including those in the **social, behavioral and economic sciences (SBES)**



## Workshop Structure and Goals



- Three-day **invitation-only** workshop in Norman, OK
- Build upon previous activities by **continuing to expand the community of scholars** in the social/behavioral/economic and other sciences
- Draw upon a national audience and involve those who have **not been involved before or who are unaware** of the value of their scholarship
- Continue refining foundational **research questions**
- Lay the groundwork for a **structure to engage the national community** in a coordinated, sustainable manner for research and the transition of outcomes to operations



## Attendee Statistics



Discipline	Number of Attendees
Meteorology/Atmospheric Science (research, operations)	19
Geography (demography, epidemiology, hazards, decision science)	13
Communication (health, risk)	10
Psychology/Cognitive Psychology/Human Factors	9
Sociology (hazards, risk, disasters, response, uncertainty)	7
Political Science/Public Policy	6
Anthropology (health, disasters)	5
Economics	5
Civil/Industrial/Systems Engineering	3
History/History of Science	2
Health/Environmental Health	2
Philosophy and Ethics	1
Emergency Management	1
Adult Education	1
<b>TOTAL</b>	<b>84</b>



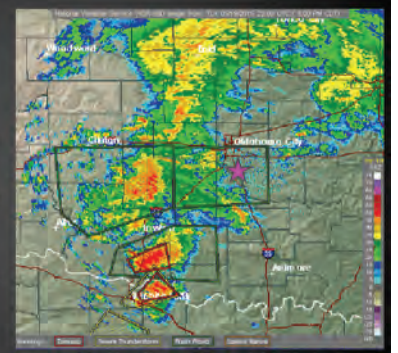
## Mother Nature's Real Time Exam



### Final Exam

A large group of tired, mostly out-of-town guests is going out for dinner after a long day in a workshop. These guests are experts in social, behavioral, economic and meteorological sciences. In other words, they make a living understanding why people make bad choices. The flood-prone community in which they are staying is under a flash flood warning for the evening and a large area of rain - some heavy - is approaching. (Did I mention the community has flood-prone areas?)

What do you think they will do?



## Expected Benefits



- A formal (though not the only), **community-based mechanism** for facilitating a wide variety of research, development, translation, and education activities and helping ensure **sustained progress** on important problems relevant to WRN
- Provision of **continuous, practical services** and resources to help researchers and operational practitioners collaborate on “nexus challenges”
- An organic, **grass-roots framework** for continually updating community research priorities and suggesting courses of action in funding and policy