

NATIONAL TORNADO SUMMIT & DISASTER STRATEGIST

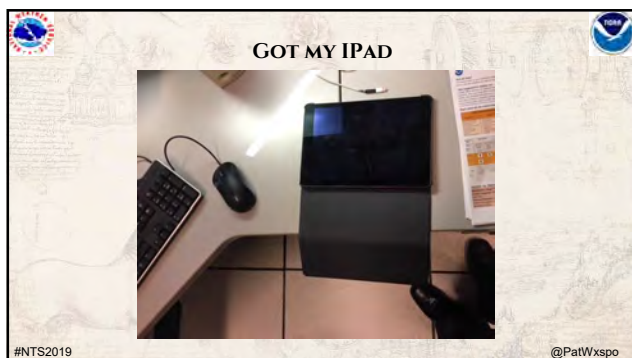
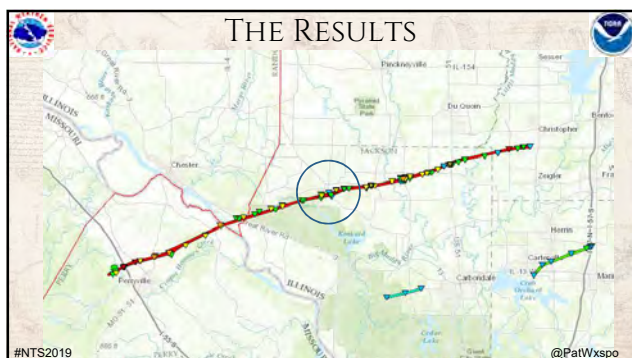
LOOKING DOWN

DRONE FOOTAGE OF A FORESTED AREA IN SOUTHERN ILLINOIS FROM THE 1 MARCH 2017 EF4 TORNADO

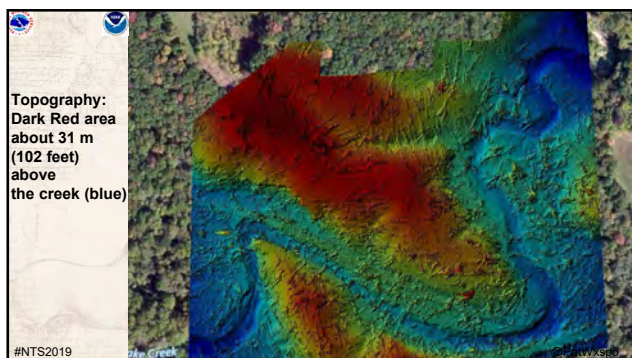
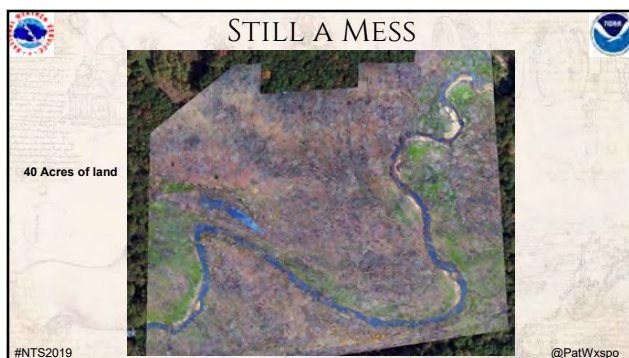
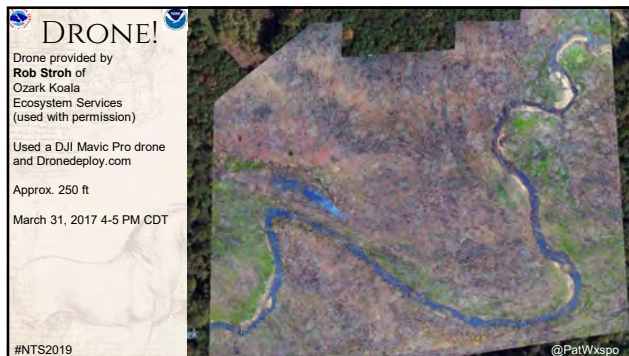
Pat.spoden@noaa.gov
NOAA/NWS Paducah, KY

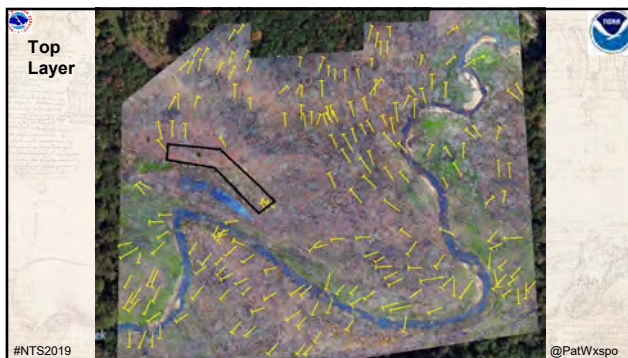
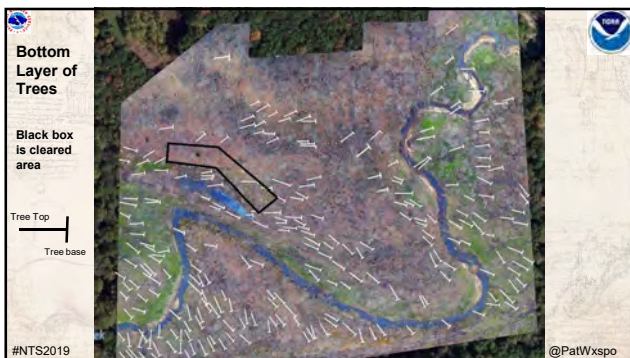
Debbie Newman
Illinois Nature Preserves Commission

#NTS2019 @PatWxspo










Costs

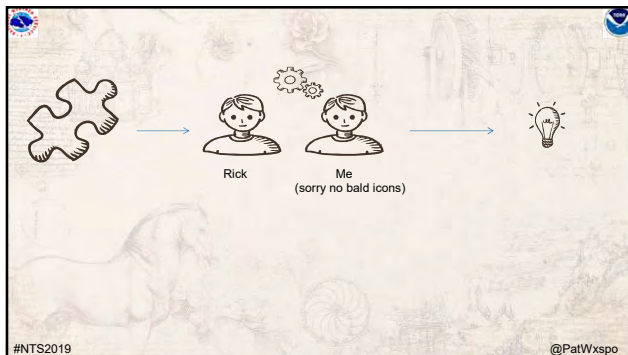
Monetary – probably \$28K just for this property alone. However, some trees were worth more than others, for example, one walnut tree was valued at \$1K, while others nearby were worth about \$500 each. So, not a simple process

Emotionally – Some people are attached to their trees, others are not. It was a huge change that occurred in just a few minutes. Will take years to regrow.

Silver lining – Increased plant bloom and diversity in areas where there is now abundant sunlight
 - Record number of Whip-poor-wills nesting in the damage area.



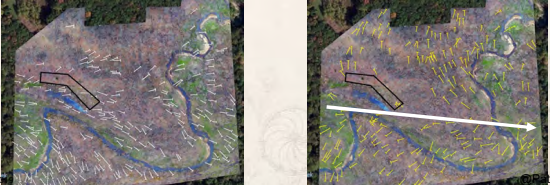
#NTS2019 @PatWxspo



Our Thoughts....

First vortex never quite made it to the property, but it was very close - inflow pulled all trees to the west

Second vortex seemed to cross the property directly almost from west to east



#NTS2019 PatWxspo

Questions?

Pat.spoden@noaa.gov

@PatWxspo - Twitter

Pat_wx - Instagram

#NTS2019 @PatWxspo